



ERA-DCKIT Wireless Push Button

Introduction

The ERA-DCKIT is a long-range, wireless door chime kit. It includes the ERA-PBTX (push button/transmitter) and the ERA-RXPG plugin. This product manual outlines programming the ERA-PBTX to the ERA-RXPG.

Helpful Notes

- All ERA transmitters are compatible with all ERA receivers.
- The ERA-PBTX is a push-button transmitter that must be programmed with an ERA-compatible receiver.
- The push button is outdoor rated.
- The push button measures 3.00" H x 2.25" W x 1.75" D.
- The halo ring around the center push will illuminate dimly for visibility at night.
- When triggered (the center push button is pressed), the center halo will illuminate brightly for approximately 2 seconds.
- The ERA-RXPG has three operational modes: strobe only, sound only, and strobe + sound (see Figure 3).
- The ERA-RXPG has 12 different melodies to choose from.
- The ERA-RXPG may be programmed with up to 12 ERA transmitters. Each transmitter may have a distinct melody.
- An ERA transmitter's range (line of sight) to the receiver is 4,000 ft.

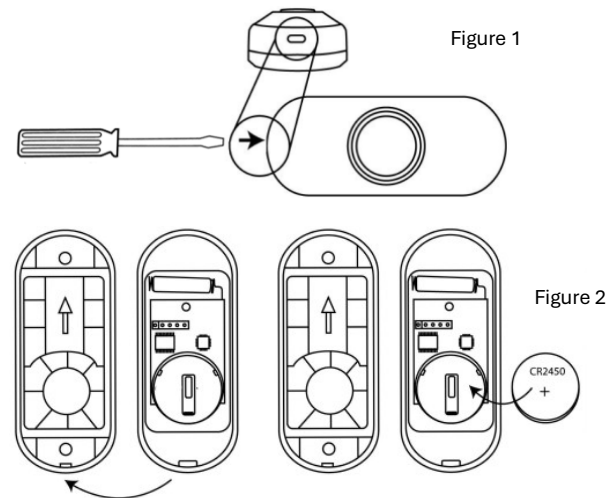
Push Button Battery Installation:

**This product contains a coin battery that could be dangerous to children. Please review the warnings regarding the batteries at the end of this manual.* The ERA-PBTX comes with the battery installed. Pull out the plastic tab to activate the battery. Test the button by pressing the center push.

Replacing the Battery:

1. Remove the silicon casket around the ERA-PBTX.

2. Insert the included screwdriver into the square hole on the bottom of the unit (figure 1). Gently push in and separate the top and bottom.
3. Install the included CR2450A 3V battery into the battery holder with the positive (+) side of the battery facing up (figure 2).
4. Replace the silicon gasket around the push button.
5. Test the battery by pressing the center push. The green halo should illuminate for approximately 2 seconds.



Pair Transmitter to Receiver:

1. Ensure the ERA-RXPG is plugged into a standard wall outlet.
2. On the ERA-RXPG receiver, hold down the "mode" button (lower button in Figure 3) until you hear a short tone sound, and the red LED (inside the front lens cover) begins to blink. This denotes that the unit is in programming mode. Release this button.
3. Press the melody selector button to scroll through available melodies. Stop pushing this button when you hear the sound you want the respective push button to play.
4. Push the center button on the push button. The receiver will play a quick chime sound, notifying the transmitter that it is programmed to the receiver. **The red LED should still be blinking.**

- To program a second transmitter (push button, door contact, motion sensor, or driveway sensor), push the melody selector button (the button on top) to scroll through available melodies. Once you have the sound you want for the additional transmitter, stop pressing the melody selector button and repeat step 4 above, triggering the sensor/transmitter.
- Once you have programmed all the transmitter(s), exit programming mode by holding down the "mode" button until you hear a short tone sound & the red LED disappears (approx. 3 seconds).

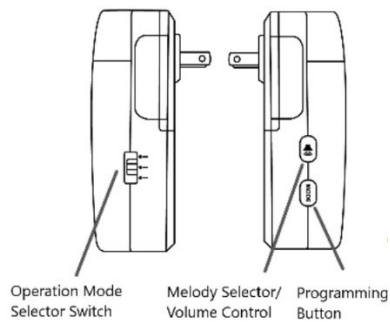


Figure 3

Test the Programming of Transmitter to Receiver:

- Ensure the ERA-RXPG receiver is plugged in & the battery is installed in the ERA-PBTX push button.
- Push the ERA-PBTX center button. When pressed, the green halo around the center push should brightly illuminate.
- Make sure the receiver is set to sound mode by moving the selector switch on the side of the receiver to sound only or sound + strobe (middle or lower position of selector switch). When triggered, the receiver should play the selected melody and/or flash.

Mounting the Push Button:

- Open the front cover by inserting the included screwdriver into the square hole on the bottom of the unit (figure 1), and gently push in to separate the top & bottom parts of the push button.

- Remove the top half of the case from the lower half of the case.
- Place the case's back cover on the wall where you want to mount it. The back cover may be mounted using the supplied screws or the double-sided tape (figure 4).
- Ensure the arrow on the back cover is pointed up (figure 4) and mount it to the wall.
- Put the top half (with battery installed) over the bottom half and snap it closed.

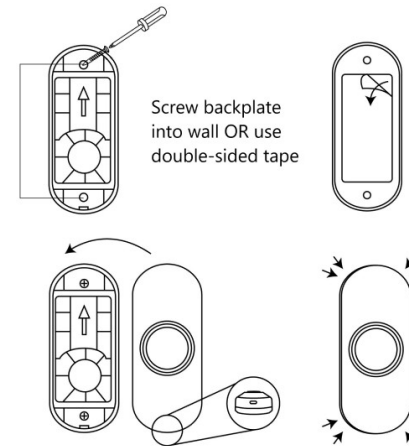


Figure 4

Low Battery Indicator:

When the battery in the ERA-PBTX is low and needs to be replaced, it signals the receiver to double-play the programmed melody and a red LED will flash for 10 minutes.

Clearing the Memory of the ERA-RXPG:

- On the ERA-RXPG receiver, hold down the "mode" button (lower button in Figure 3) until you hear a short tone sound, and the red LED (inside the front lens cover) begins to blink. This denotes that the unit is in programming mode. Release this button.
- Simultaneously hold the "mode" & "Volume" buttons for approximately 5 seconds until you hear a quick chime sound. This notifies that the memory of the ERA-RXPG has been erased.

Warranty

Safeguard Supply, a LHE, Inc. company, warrants this product to be free of defects in materials and workmanship for a period of one year from the date of purchase. This warranty does not cover damage resulting from accident, abuse, act of God, or improper operation. If this product does become defective, simply return it to Safeguard Supply. Please include a note describing the troubles along with your name and return address as well as the original sales receipt. If the product is covered under the warranty, it will be repaired or replaced at no charge. If it is not covered by the warranty, you will be notified of any charges before work is done.

FCC Statement

This equipment complies with FCC radiation exposure limits set forth for an uncontrolled environment. This equipment should be installed and operated with minimum distance 5mm between the radiator and your body. This transmitter must not be co-located or operating in conjunction with any other antenna or transmitter.


This device complies with Part 15 of the FCC Rules. Operation is subject to the following two conditions: (1) this device may not cause harmful interference, and (2) this device must accept any interference received, including interference that may cause undesired operation.

changes or modifications not expressly approved by the party responsible for compliance could void the user's authority to operate the equipment.

This equipment has been tested and found to comply with the limits for a Class B digital device, pursuant to Part 15 of the FCC Rules. These limits are designed to provide reasonable protection against harmful interference in a residential installation. This equipment generates, uses and can radiate radio frequency energy and, if not installed and used in accordance with the instructions, may cause harmful interference to radio communications. However, there is no guarantee that interference will not occur in a particular installation.

If this equipment does cause harmful interference to radio or television reception, which can be determined by turning the equipment off and on, the user is encouraged to try to correct the interference by one or more of the following measures:

- Reorient or relocate the receiving antenna.
- Increase the separation between the equipment and receiver.
- Connect the equipment into an outlet on a circuit different from that to which the receiver is connected.
- Consult the dealer or an experienced radio/TV technician for help.

⚠ WARNING	
<ul style="list-style-type: none">• INGESTION HAZARD: This product contains a button cell or coin battery.• DEATH or serious injury can occur if ingested. A swallowed button cell or coin battery can cause internal Chemical Burns in as little as 2 hours.• KEEP new and used batteries OUT OF REACH of CHILDREN• Seek immediate medical attention if a battery is suspected to be swallowed or inserted inside any part of the body.	
<p>This product may contain button cells or coin batteries, including CR1632, CR2016, CR2032, and CR2450, each with a nominal voltage of 3V.</p>	

Remove and immediately recycle or dispose of used batteries according to local regulations and keep away from children. **DO NOT** dispose of used batteries in household trash or incinerate.

- Call a local poison control center for treatment information.
- This product uses a Lithium CR2450 coin style battery with a nominal voltage of 3V.
- Non-rechargeable batteries are not to be recharged.
- **DO NOT** force discharge, recharge, disassemble, heat above (manufacturer's specified temperature rating) or incinerate. Doing so may result in injury due to venting, leakage, or explosion resulting in chemical burns.
- Ensure the batteries are installed correctly according to polarity (+ and -).
- **DO NOT** mix old and new batteries, different brands or types or batteries, such as alkaline, carbon-zinc, or rechargeable batteries.
- Remove immediately and recycle or dispose of batteries from equipment not used for an extended period of time according to local regulations.
- Always completely secure the battery compartment. If the battery compartment does not close securely, stop using the product, remove the batteries, and keep them away from children.